

**SPRINT**  
by WISKA

**WISKA** ®  
make power smile



**ESKV-P**  
**SPRINT® Push-In Cable Gland**

# Push and Go!

Expanding upon our already comprehensive range of cable glands and entries we are pleased to introduce the **ESKV-P – our SPRINT® Push-In cable gland**.

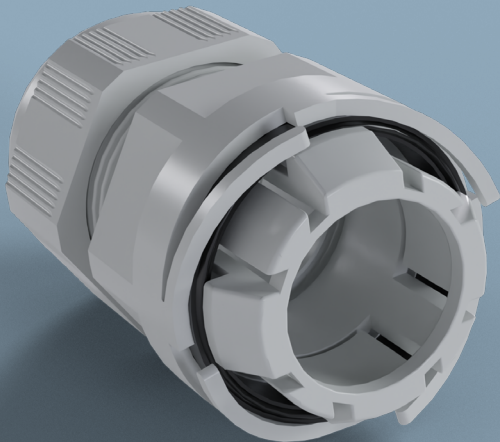
An IP68 polyamide cable gland featuring our patented **push-in installation system**, saving users **time and money**.



# Why use a push-in gland?

The ESKV-P push-in gland is a great option for **fast installation requirements** or situations when access internally to a junction box **or entry point cannot be obtained**.

The unique design allows users to **install** a gland **without the use of a locknut** or threaded entry.





## How does it work?

Simple insert the ESKV-P into your entry, twist to tighten and go!

No locknut required or access to the rear of the gland. This easy to use function makes installation time quick and simple.

# The SPRINT® Push-In Cable Gland



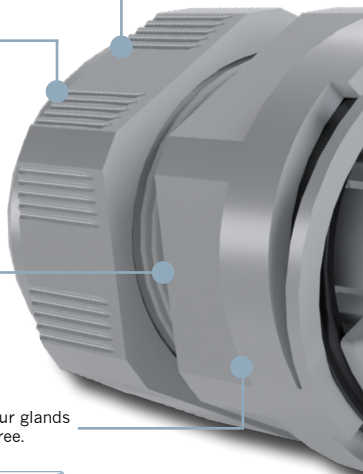
**IP68** (5 bar 30 mins)  
EN 60529

Patented clamping cage offering  
**superior strain relief.** EN 62444



**Vibration proof**  
thanks to the unique  
thread pitch design.

**100% polyamide** making our glands  
**UV resistant** and halogen free.



Part of the **SPRINT® System** meaning the ESKV-P can be **used with a wide range of inserts** to suit virtually any cable type.



The ESKV-P can be **used with a number of different capnuts** from our **SPRINT® System**, including **bend protection** and **external strain relief**.



Patented **push-in system** making installation **quick and easy**.



No locknut or threaded entry required.



Available in light grey and black, M25.



**SPRINT**  
by WISKA

# Our SPRINT® System



The **SPRINT® System** (comprising of polyamide, brass and stainless-steel cable glands) offers a solution for almost any type of cable.

All products in the system are interchangeable and the unique design and variety of product accessories allows us to offer a superior cable gland to suit your requirements.

**Explore more** online or contact us directly.

## Quality matters

Our products are developed and tested extensively, ensuring they **meet the highest demands under the toughest of conditions.**

These tests are conducted by our team of highly skilled designers and engineers at our state of the art laboratory facilities in Germany.



# Technical data

<b>Protection class</b>	IP68
<b>Material</b>	Polyamide gland, EPDM seal, TPE connection seal
<b>Size</b>	M25
<b>Colours</b>	Light Grey (RAL 7035) and Black (RAL 9005)
<b>Clamping range</b>	9.0 - 17.0 mm
<b>Temperature range</b>	40 °C - 100 °C
<b>Glow wire test</b>	750 °C
<b>Wall thickness for installation</b>	0.5 - 4.0 mm

## **WISKA Hoppmann GmbH**

Kisdorfer Weg 28  
24568 Kaltenkirchen  
Germany

contact@wiska.com  
www.wiska.com

ESKV-P 10/2022